

Silo Protection Systems Pinch Valves

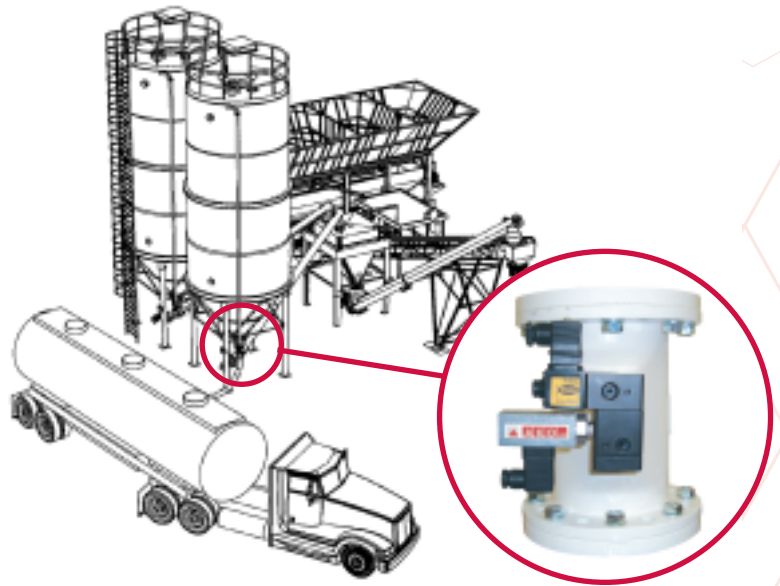


- A pinch valve is proven to be by far the best valve for conveying abrasive products like sand/cement. The main reason to use pinch valves is that they will last far longer, and can be repaired much easier than butterfly valves.
- Proven in the industry with references.
- Easy maintenance
- Reliable UK supplier of valves and spares.
- Clear bore, no blockages.
- Quickest filling time due to lack of obstructions.
- Reliable UK manufacturer of solenoid valves - fully tested.

Please contact the AKO sales team for a complete cost comparison and more general information.

13 Alvis Way, Royal Oak Trading Estate,
Daventry, Northants NN11 8PG.
Tel: 01327 312747
Fax: 01327 312565
e-mail: sales@ako-valves.com
Web: www.ako-valves.com

The best valve for abrasive silo filling applications



BREAKTHROUGH!! Standard AKO Pinch Valves now **FAILSAFE**

Damage to silos and their accessories is most likely caused during the operation of filling from road tankers. Normally this is caused from over filling or excessive pressurisation.

It is the responsibility of the end user to prevent over pressurisation in the form of a silo safety system.

Option 1 - Standard AKO Pneumatic Pinch Valve

AKO have designed a new system with a unique manufactured RGS solenoid valve. The Pinch Valve will fail closed with loss of air or power. With a regular maintenance plan sleeves can be simply changed before they fail.

“Play Safe with AKO FAILSAFE Valves”

Working in partnership with

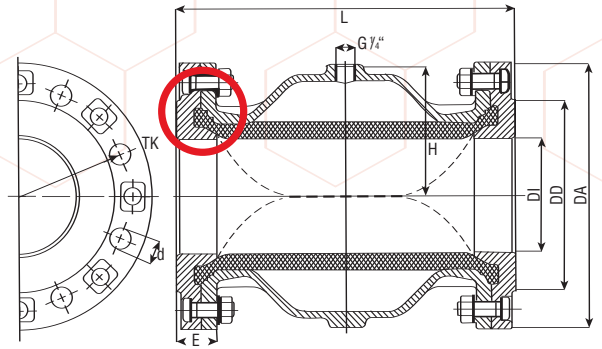


Valve & Flow Control Technology

AKO Pneumatic Pinch Valve Type V/VF

Flange type DN 80 to 100mm
(others available on request)

Differential Pressure: 2.5 Bar



DN (mm)	DI (mm)	DA (mm)	DD (mm)	d (mm)	Screws	TK (mm)	L (mm)	H (mm)	E (mm)	Weight (kg)	Volume (l) (approx.)	P max (bar)
80	80	200	138	18	8	160	228	90,0	29,0	5,6	0,60	6
100	100	220	158	18	8	180	282	107,0	35,0	8,5	1,20	6

AKO Pneumatic Controls

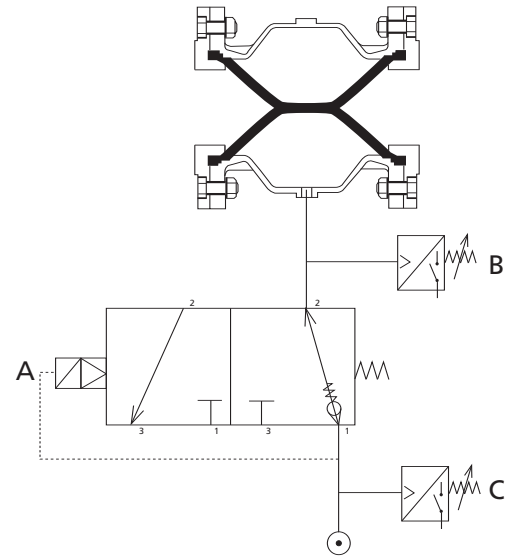
(Example)

Pinch Valve Type V/VF

A - **RGS** A unique 3\2 Solenoid Valve with built in non-return valve

B - Pressure switch to indicate position of pinch valve

C - Pressure switch to indicate pressure drop in system (linked to solenoid valve)



AKO Electrical Drawing

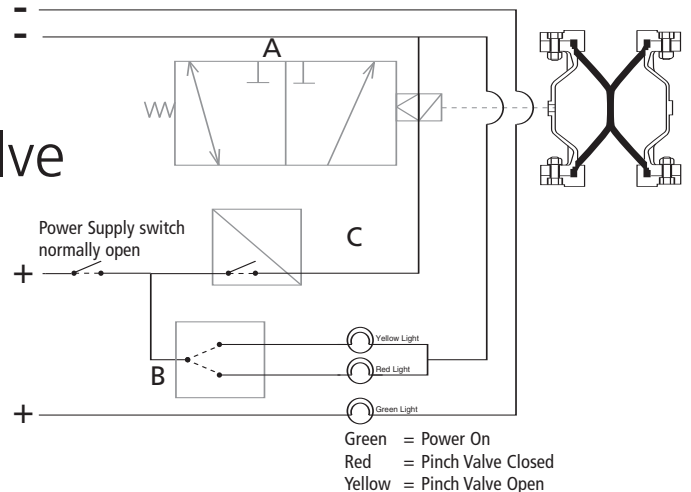
(Example)

Pneumatic Pinch Valve Type V/VF

A - **RGS** 3\2 Solenoid Valve with built in non-return valve

B - Pressure switch to indicate position of pinch valve

C - Pressure switch to indicate pressure drop in system (Normally closed)



Valve body: Aluminium

We will not be held responsible for changes to drawings.

Flanges: Aluminium BS4504 PN10/16 (ANSI flanges also available)

Sleeves: Natural rubber

Accessories:

Please contact the AKO sales team for more information.

Industry/Application Examples: Silo Safety Systems.

Abrasives, Powder handling/bulk, Quarrying, Water, Chemical, Agriculture, Pharmaceutical, Pneumatic conveying equipment, Food, Flour, Sugar, Sand, Foundry Sand etc.

AKO UK Ltd: 13 Alvis Way, Royal Oak Trading Estate, Daventry, Northants NN11 8PG.

Tel: 01327 312747 Fax: 01327 312565 e-mail: sales@ako-valves.com Web: www.ako-valves.com



Valve & Flow Control Technology

AKO UK Product Range Also Includes:

Pneumatic/Hand Operated Pinch Valves, Pressure Relief Valves, Pressure Sensors, Knifegate Valves, Butterfly Valves, Diaphragm Valves and Road Tanker Products.